

Connecting the SUPER CUB50(JBH-AA04) ECU to the ENIGMA Bluetooth version

This Manual is SUPERCUB 50(JBH-AA04) only.
For the AA01 SUPERCUB and LITTLE CUB, please refer to the dedicated ENIGMA manual.

Supported models of this manual

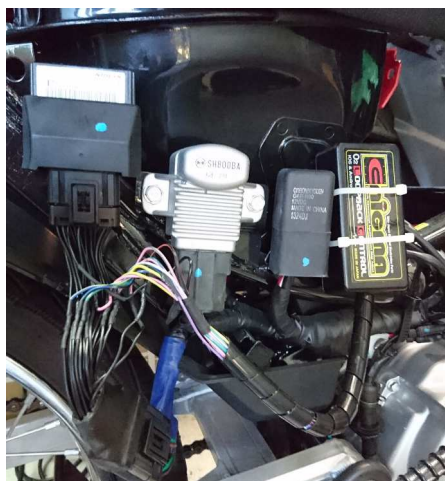
ENIGMA type ENIGMA (EBD362 / EBD362RTF)
Vehicle type HONDA SUPERCUB50 (JBH-AA04)

If you use the RTF type, remove the coupler which is connected to the ECU, please connect the coupler that has come out from ENIGMA RTF to the ECU and the vehicle body side. Please make sure that the lock sound is a "click".

Installation should be done in a safe place.

A basic knowledge of the SUPERCUB50(Fuel injection car JBH-AA04) maintenance is necessary.

The normal vehicle has an ECU inside the side cover on the lower right side of the vehicle while riding on the vehicle. Remove the right side cover according to the manual. The ECU is rubber-mounted when the side cover is removed.



Remove the coupler connected to the ECU, process the wiring and interrupt ENIGMA.
Install ENIGMA close to water.

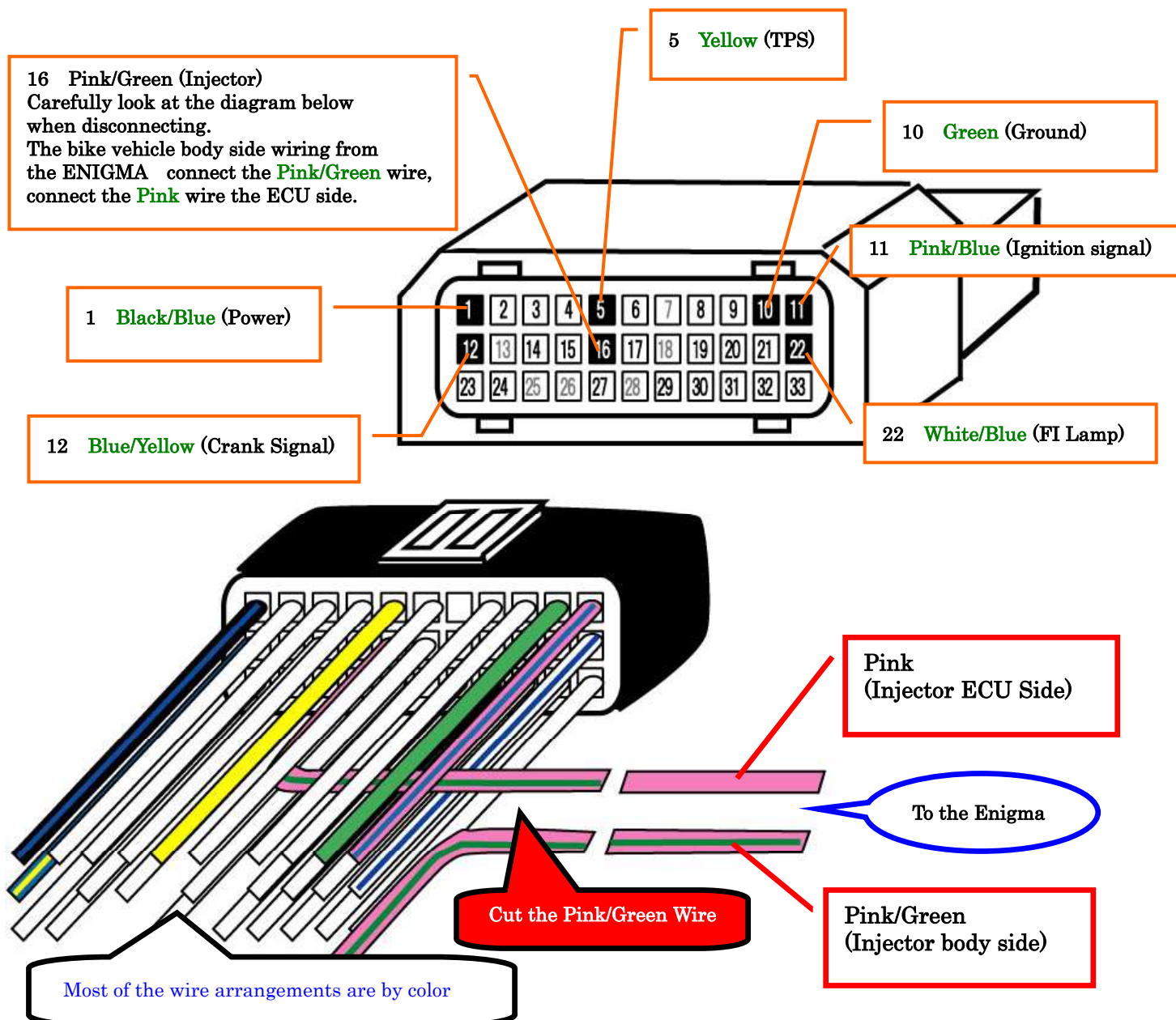
Make an **interrupt connection** from the ENIGMA wiring to the wiring on the coupler side.

(AN interrupt connection can made without cutting but by making a branch in the normal connection)

Do not use an electro tap on the interrupt wiring connection. It causes many connection issues that are problematic to the operation of the ENIGMA. (Use solder or the like for improved reliability.)

The wires from the Enigma will be the fundamentally the same, or similar to that of the wires it will connect to from the bike. Please carefully follow the diagram below when making the connection. There are a total of 8 wires.

- The purple wire is a engine revolution output service cable and is not to be connected to the ECU.
- By cutting the No.16 Pin (Pink/Green) wire of ECU (Injecttor), the bike vehicle body side wiring from the ENIGMA connect the Pink/Green wire, connect the Pink wire the ECU side.
As there is polarity in connection, please check well in the figure below and connect it without any mistake.
- Terminal 9 and Terminal 10 are both green wires. be careful.
- In order to prevent the reporting water from entering into the ENIGMA inside from the base of the wiring from the ENIGMA , it is recommended that you install in the lower wiring side in the vertical the ENIGMA .



ECU terminal connected 7wires 1,5,10,11,12,16,22.Please confirm the picture.

The purple line is the service output line. The ENIGMA will output 5V each crank rotation. Most commercially available digital tachometers are supported. Exact values will be displayed if these cables are connected. They are useful to various applications. Do not short-circuit by taping when there is no need.

The limiter has not been canceled after the wiring connection is complete. In order to perform limiter cancellation, it is necessary to change the setting with ENIGMA operation software on a PC or smartphone.

Please use the **ENIGMA** dedicated app for the iOS/Android version of the app. Download the **SUPERCUB50** dedicated ENIGMA app from the model selection screen in the app.
The ENIGMA dedicated app is common to AA01/AA04. Other Vehicle dedicated apps cannot be used.

Please use the SUPERCUB50 ENIGMA dedicated PCsoftware. **The SUPERCUB50 ENIGMA dedicated PCsoftware is common to AA01/AA04.**
Other Vehicle, Other ENIGMA dedicated PCsoftwares, cannot be used.

The Enigma operating software can be downloaded free from our website.

<http://www.dilts-japan.com>