

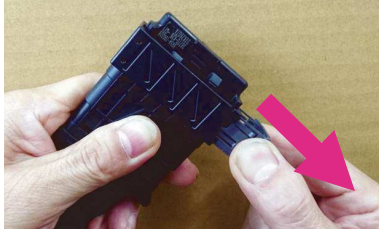
Please be sure to read these.



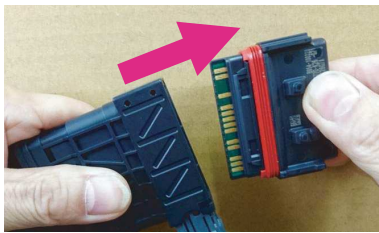
Slot type coupler RTF Handling Precautions

Improper handling may result in serious malfunction and cannot be easily repaired. Please be careful.

How to remove the stock ECU



① To remove the stock ECU, pull the gray lever as far as it will go.

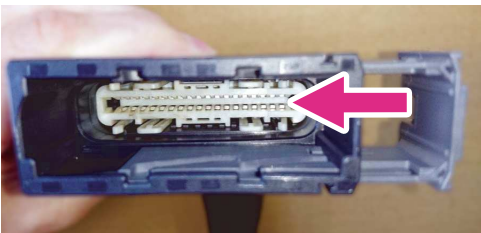


② When you pull the lever all the way, the ECU will become free. Grasp the coupler body firmly, pull the ECU straight out. Do not touch the terminals of the ECU with your hands.

What to check before installing the stock ECU in ENIGMA



① Check that there is no dust or debris in the coupler slot of the product. Next, make sure that the gray lever is pulled all the way out.



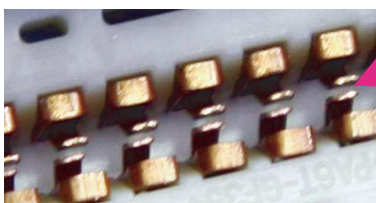
② **Every time** make sure that the metal terminal inside the coupler slot (see photo) is open. Make sure that the metal terminals on the arrow part open evenly and that there is a gap for the "plug-in part" of the ECU to enter. Do the same for the body side coupler.

important

The metal terminal inside the coupler to be checked has a structure that grips the board tightly from above and below when the ECU is inserted. If you insert the ECU when it is not properly opened, you will break the terminals. Look at the picture and check it carefully.

Check inside the coupler slot

Incorrect



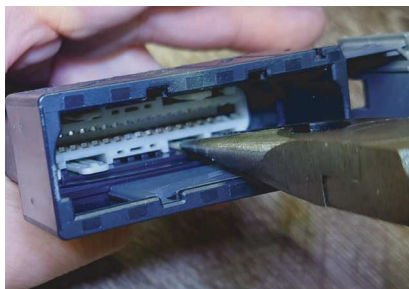
The metal terminal to grip the terminals of the ECU is popping out.(see photo)
If you insert in this state, you will break the terminals.

Correct



The metal terminal to grip the terminals of the ECU is properly opening.(see photo)
The thickness of the board terminal protruding from the ECU is secured.

If the terminal inside the coupler slot is not in the correct position



Using radio pliers or similar tools, pull horizontally and gradually so as not to damage the wide claws that protrude from four locations on the top, bottom, left, and right sides of the white part at the back inside the coupler slot. Once the terminal looks like the "correct example", do not pull it any further.

Do not touch the metal terminal parts inside the coupler.
Do not grip radio pliers or similar tools too tightly.
Also, do not pull too hard at once.

How to install the stock ECU in ENIGMA



① Check the orientation of the ECU, insert it slowly. If you mistake on the front and back, can not insert the coupler slot. Push the ECU body straight into the coupler.

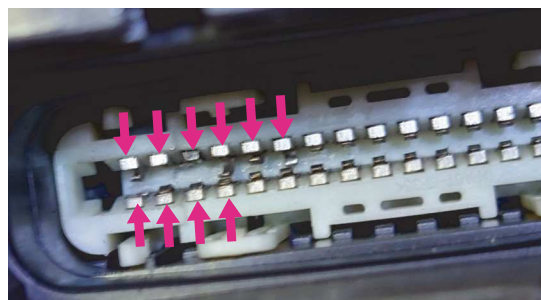


② While pushing the ECU, push the gray lever back to its original position. At this time, the ECU is linked to the movement of the gray lever. The system goes deeper and is set in the correct position.

This type of ECU has the board terminal section exposed from the main body, so if dirt, dust, grime, oil, or fingerprints get on it, it can cause serious trouble. Handle the ECU with care after removing it. Please also be careful of static electricity.

! TROUBLE CASE

This is an example where the terminal parts is broken without checking inside the coupler slot. The terminal parts pointed to by the arrow is broken. Since it cannot be repaired, it will be completely replaced in this case.



There are important precautions for ECU removal and installation as explained above. Those who are uneasy about the above work and who do not understand please be sure to install in a specialty shop.

***This company will not bear any responsibility whatsoever for any trouble.
Please understand the contents and work correctly.***

The apps download & Operation manual



Connecting the GROM(2BJ-JC92) ECU to the ENIGMA SemiFull Bluetooth version

Supported models of this manual

ENIGMA type ENIGMA SemiFull (SF2337RTF)

Vehicle type HONDA GROM (2BJ-JC92 1000001-1099999)

This ENIGMA SemiFull can't connect the GROM(EBJ-JC61 / 2BJ-JC75 / 8BJ-JC92) .

Installation should be done in a safe place.

A basic knowledge of GROM(2BJ-JC92) maintenance is necessary.

There is the ECU in the cowl on the lower left side of the seat.

Remove the seat cover, the gas tank cover on the left side.

After removing the ECU to the rubber mount, disconnect the ECU from the body coupler and connect the ENIGMA SemiFull coupler between the ECU and the body coupler.

When disconnecting and reconnecting the coupler, always pull the white plastic part inside the receiving coupler on both the ENIGMA and motorcycle sides to ensure the terminals are retracted. See separate sheet.

Attach the the ECU to the rubber mount.

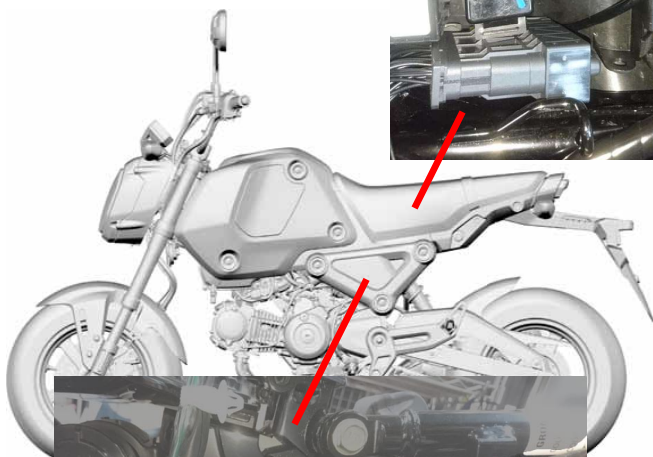
Place the ENIGMA SemiFull in the gas tank cover.

In order to prevent the reporting water from entering into the ENIGMA inside from the base of the wiring from the ENIGMA SemiFull , it is recommended that you install in the lower wiring side in the vertical the ENIGMA SemiFull.

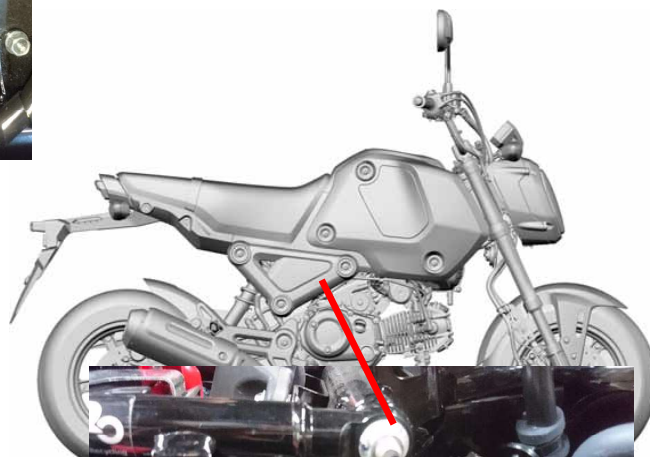
Installation example



In the space behind the battery under the seat
Example of installing ECU and ENIGMA.



ECU installation



Example of ENIGMA mounted inside the right side cowl

The Purple wire is the service output wire.

The ENIGMA SemiFull will output 5V each crank rotation (or Once every two crank revolutions). Most commercially available digital tachometers are supported. Exact values will be displayed if these cables are connected. They are useful to various applications.

Do not short-circuit by taping when there is no need.

The White wire is a pit lane limiter switch service.

When you do not want to use this function, please tip of the wire is insulated with tape so as not to short against the metal part.

The Gray/Red wire is a wire for the MAP changeover switch.

When you do not want to use this function, please tip of the wire is insulated with tape so as not to short against the metal part.

The service output wire (Purple) , the pit lane limiter switch wire (White) , and the MAP changeover switch wire (Gray/Red) are contained within a wire wrapped in spiral tubing. Please remove wires from the spiral tubing as needed for extension or other use.

Please use the Enigma Semifull dedicated app for the iOS/Android version of the app.

Download the **GROM (2BJ-JC92)** dedicated Enigma Semifull app from the model selection screen in the app. Other Vehicle dedicated apps cannot be used.

Please use the **GROM (2BJ-JC92)** dedicated Enigma Semifull PCsoftware.

Other Vehicle, Other ENIGMA dedicated PCsoftwares,cannot be used.

The Enigma Semifull operating software can be downloaded free from our website.

<http://www.dilts-japan.com>

Installation of the pit lane limiter switch

"White wire" that has come out from ENIGMA Semifull is the wiring for the pit lane limiter switch installation.

Pit lane limiter to the rotation of the constant engine speed to control the speed only when the external switch ON

You control. Do those who want to use this feature by performing the following tasks.

In general, to buy a handle mounting switch, which is commercially available, it should be placed in easy-to-use position.

(If you are installing to handle and place easy to operate location does not interfere with operation)

Switch is common thing that cuts in the "OFF" position to connect with the "ON" position.

Switch is not suitable to be connected only when you press. be careful.

Connect the White line the installation of the switch is out of the ENIGMA Semifull when finished.

Connect the White line to one of the terminals of the switch. The other is connected to ensure that "body earth".

The most reliable of is to connect to the negative battery. Circuit will be burned down and unavailable when connecting to the positive wrong. Never done.

This completes the installation of pit lane limiter switch with more work

When you do not want to use the pit lane limiter function, please tip of the wire is insulated with tape so as not to short against the metal part.

Installation of the MAP changeover switch

"Gray/Red wire" that has come out from ENIGMA Semifull is the wiring for the MAP changeover switch installation. You can instantly switch between a two maps with the MAP changeover switch.

Do those who want to use this feature by performing the following tasks.

In general, to buy a handle mounting switch, which is commercially available, it should be placed in easy-to-use position. (If you are installing to handle and place easy to operate location does not interfere with operation.)

Switch is common thing that cuts in the "OFF" position to connect with the "ON" position.

Switch is not suitable to be connected only when you press. be careful.

Connect the Gray/Red line from the ENIGMA Semifull when finished the installation of the switch.

Connect the Gray/Red line to one of the terminals of the switch. The other is connected to ensure that "body earth". **The most reliable of is to connect to the negative battery. Circuit will be burned down and unavailable when connecting to the positive wrong. Never done.**

This completes the wiring for the MAP changeover switch with more work.

When you do not want to use the wiring for the MAP changeover function, please tip of the wire is insulated with tape so as not to short against the metal part.

When switching maps, Be sure to transfer the data to both maps before starting to avoid engine trouble.